

Go to [www.vtechphones.com](http://www.vtechphones.com) to register your product for enhanced warranty support and the latest VTech product news.

VM333  
VM333-2

Safe & Sound®  
Pan & Tilt Full Color  
Video Monitor



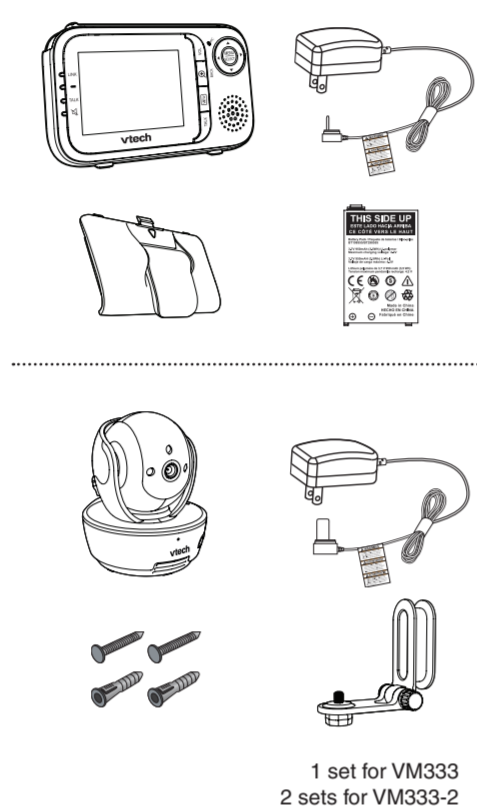
## Congratulations

on purchasing your new VTech product. Before using this product, please read **Important safety instructions**.

This manual has all the feature operations and troubleshooting necessary to install and operate your new VTech product. Please review this manual thoroughly to ensure proper installation and operation of this innovative and feature rich VTech product.

For support, shopping, and everything new at VTech, visit our website at [www.vtechphones.com](http://www.vtechphones.com).

## What's in the box



1 set for VM333  
2 sets for VM333-2

**vtech**  
User's manual

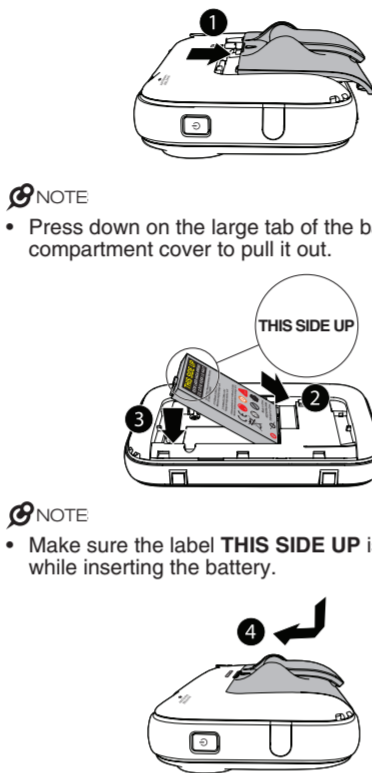
## Install the battery

The parent unit runs on rechargeable battery or AC power. To continuously monitor your baby, make sure you use both battery and AC power at the same time. With the battery alone, the parent unit can cordlessly run for a short time only.

### NOTES

- Use only the battery supplied with this product.
- The operating time for using the rechargeable battery is short. If you want to monitor your baby for a long time, we recommend you connect the parent unit to AC power.
- If the parent unit will not be used for a long time, disconnect and remove the battery to prevent possible leakage.

Install the battery as shown below.



### NOTE

- Press down on the large tab of the battery compartment cover to pull it out.

### NOTE

- Make sure the label **THIS SIDE UP** is facing up while inserting the battery.

## Replace the battery

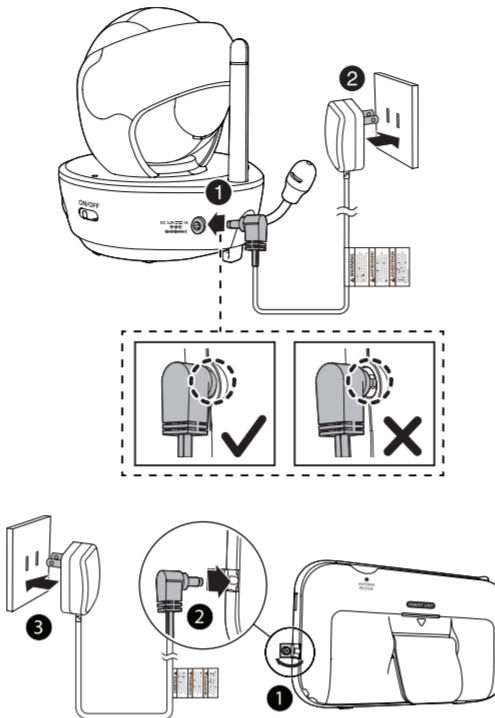
To replace the battery, press down on the large tab of the battery compartment cover and pull it out, then follow the steps above to install the battery.

## Connect and charge the battery

### NOTES

- Use only the power adapters supplied with this product.
- Make sure the electrical outlets are not controlled by wall switches.
- The power adapters are intended to be correctly oriented in a vertical or floor mount position.
- It takes longer to charge the battery when the parent unit is turned on. To shorten the charging time, turn the parent unit off while charging.
- The standby time varies depending on the sensitivity level you set, your actual use and the age of the battery.

## Connect the baby monitor



## Charge the parent unit battery

When you have connected the parent unit and installed its battery, press and hold **⏻** to turn on the parent unit. The battery icon indicates the battery status (see the following table).

### NOTES

- The parent unit battery is fully charged after 12 hours of continuous charging.
- It takes longer to charge the battery when the parent unit is turned on. To shorten the charging time, turn the parent unit off while charging.
- The standby time varies depending on the sensitivity level you set, your actual use and the age of the battery.

Battery indicators	Battery status	Action
The battery icon is off and  displays.	No battery is installed but operates using AC power, or the battery has been installed incorrectly.	Install the parent unit battery. Charge without interruption (at least 30 minutes).
The screen displays <b>Battery low</b> and . The  light flashes.	The battery has very little charge and may be used for only a short time.	Charge without interruption (about 30 minutes).
The battery icon becomes solid .	The battery is fully charged.	To keep the battery charged, connect it to AC power when not in use.

## Before use

### NOTE

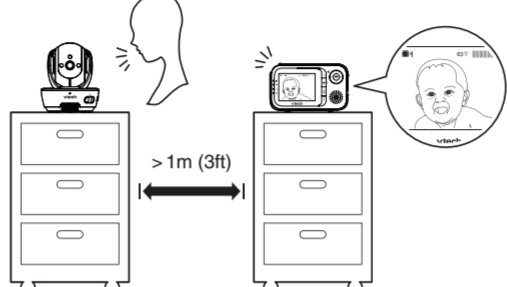
- This baby monitor is intended as an aid. It is not a substitute for proper adult supervision, and should not be used as such.

## Test your baby monitor

You may test the baby monitor before initial use and at regular times thereafter.

### CAUTION

- For hearing protection, make sure the parent unit is more than 1 meter (3 feet) away from the baby unit. If you hear any high-pitched noise, move the parent unit further until the noise stops. You can also press **VOL** and then **▼** or **▲** on the parent unit to lower or mute the noise.



- Make sure your baby units and parent unit are on.
- The parent unit displays images from the baby unit.
  - Speak towards the baby unit microphone. You will hear the sound at the parent unit.
- If you have more than one baby unit, press **VIEW** on your parent unit. The screen switches to other baby units. Then, repeat step 2.

### NOTE

- When the parent unit displays **No link**, and the **LINK** LED light flashes, move the parent unit closer to the baby unit (observe the minimum distance of 1 meter/ 3 feet). You can also check if the baby monitor is connected to a live power socket and switched on.

### TIP

- Increase the parent unit speaker volume if you cannot hear the sounds transmitted from the baby unit.

## Positioning the baby monitor

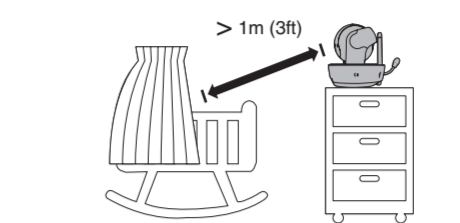
### CAUTION

- Keep the baby units out of the reach of your baby. Never place or mount the baby units inside the baby's crib or playpen.

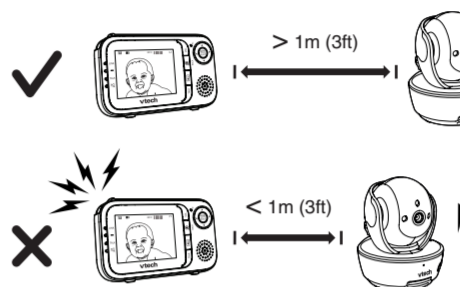
### NOTE

- To avoid interference from other electronic devices, place your baby monitor far away from devices such as wireless routers, microwaves, cell phones and computers.

- Place the baby units more than 1 meter (3 feet) away from your baby.



- Place the parent unit more than 1 meter (3 feet) away from the baby units.



### CAUTION

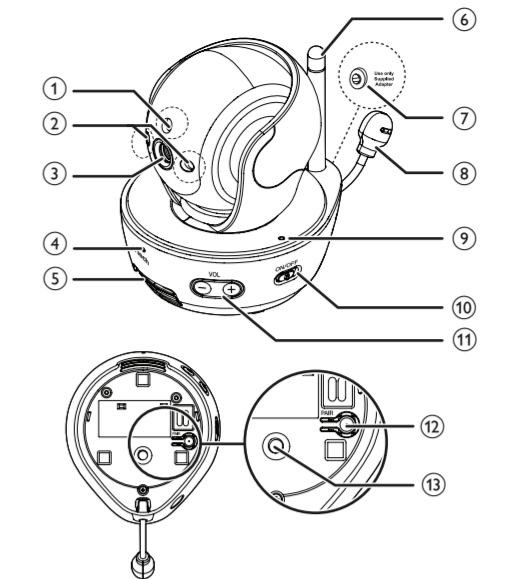
- If you experience high-pitched screeching noise from your baby monitor while positioning:
  - Make sure your baby units and parent unit are more than 1 meter (3 feet) apart, OR
  - Turn down the volume of your parent unit.

## Operating range

The operating range of the baby monitor is up to 300 meters (1,000 feet) outdoors or 50 meters (160 feet) indoors. The actual operating range may vary depending on the environmental conditions and other interferences such as walls, doors and other obstructions.

## Overview

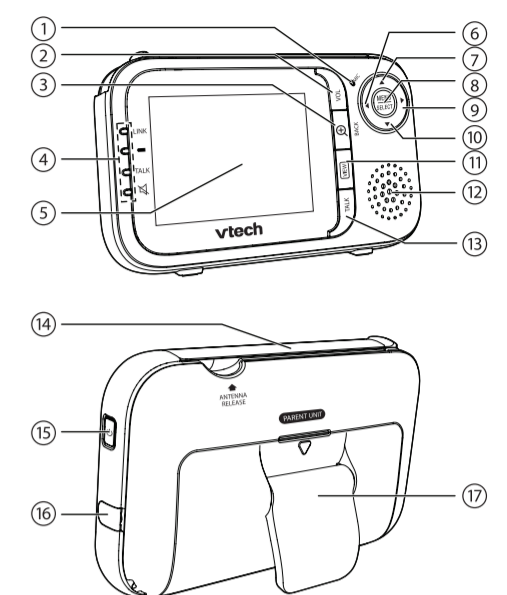
### Baby unit overview



1	Light sensor
2	Infrared LEDs
3	Camera
4	Microphone
5	Speaker
6	Antenna
7	Power jack
8	Temperature sensor
9	ON/OFF LED light <ul style="list-style-type: none"> <li>On when the baby unit is turned on and is paired to the parent unit.</li> <li>Flashes when the baby unit is not being viewed; or when the link to the parent unit is lost.</li> </ul>
10	ON/OFF switch <ul style="list-style-type: none"> <li>Slide to turn on or off the baby unit.</li> </ul>
11	-VOL/+ <ul style="list-style-type: none"> <li>Press to adjust the baby unit speaker volume. It determines the talkback volume transmitted from parent unit.</li> </ul>

12	<b>PAIR</b> <ul style="list-style-type: none"> <li>Your baby units and parent unit provided are already paired.</li> <li>Press and hold on accessory baby units (VM303, purchased separately) to pair to the parent unit.</li> </ul>
13	<b>Threaded socket</b> <ul style="list-style-type: none"> <li>For wall mount installation use.</li> </ul>

### Parent unit overview



1	<b>MIC (Microphone)</b>
2	<b>VOL</b> <ul style="list-style-type: none"> <li>Press to enter the parent unit speaker volume adjustment mode.</li> </ul>
3	<b>Zoom</b> <ul style="list-style-type: none"> <li>Press to zoom in or out while viewing image in <b>Single Baby unit mode</b> or <b>Patrol Mode</b>.</li> </ul>
4	<b>LED lights</b> <ul style="list-style-type: none"> <li>Indicate the different statuses of the parent unit. For details, refer to <b>Parent unit lights</b>.</li> </ul>
5	<b>LCD display</b>

4	<b>⏻ On/off</b> <ul style="list-style-type: none"> <li>Press and hold to power on.</li> <li>Press and hold again to power off.</li> </ul>
5	<b>TALK</b> <ul style="list-style-type: none"> <li>Press and hold to talk to the selected baby unit in <b>Single Baby unit mode</b> or <b>Patrol Mode</b>.</li> </ul>
6	<b>⬅️ BACK</b> <ul style="list-style-type: none"> <li>While in a menu, press to return to the main menu or idle screen.</li> <li>While in <b>Single Baby unit mode</b> or <b>Patrol Mode</b>, press and hold to move the baby unit camera leftward.</li> <li>While in <b>Split Baby unit mode</b>, press to move the selection box leftward.</li> </ul>
7	<b>⬆️</b> <ul style="list-style-type: none"> <li>While in a menu, press to scroll up.</li> <li>While in <b>Single Baby unit mode</b> or <b>Patrol Mode</b>, press and hold to move the baby unit camera upward.</li> <li>While in <b>Split Baby unit mode</b>, press to move the selection box upward.</li> </ul>
8	<b>MENU/SELECT</b> <ul style="list-style-type: none"> <li>Press to enter the menu.</li> <li>While in a menu, press to choose an item, or save a setting.</li> </ul>
9	<b>➡️</b> <ul style="list-style-type: none"> <li>While in a menu, press to choose an item.</li> <li>While in <b>Single Baby unit mode</b> or <b>Patrol Mode</b>, press and hold to move the baby unit camera rightward.</li> <li>While in <b>Split Baby unit mode</b>, press to move the selection box rightward.</li> </ul>
10	<b>⬇️</b> <ul style="list-style-type: none"> <li>While in a menu, press to scroll down.</li> <li>While in <b>Single Baby unit mode</b> or <b>Patrol Mode</b>, press and hold to move the baby unit camera downward.</li> <li>While in <b>Split Baby unit mode</b>, press to move the selection box downward.</li> </ul>
11	<b>VIEW</b> <ul style="list-style-type: none"> <li>Press to change the screen to view images from different baby units.</li> </ul>

12	<b>Speaker</b>
13	<b>TALK</b> <ul style="list-style-type: none"> <li>Press and hold to talk to the selected baby unit in <b>Single Baby unit mode</b> or <b>Patrol Mode</b>.</li> </ul>
14	<b>Antenna</b>
15	<b>⏻ On/off</b> <ul style="list-style-type: none"> <li>Press and hold to power on.</li> <li>Press and hold again to power off.</li> </ul>
16	<b>Power jack</b>
17	<b>Stand</b>

## Parent unit lights

<b>LINK</b>	On when the parent unit is linked to the baby unit. Flashes when the link to the baby unit being viewed in <b>Single Baby unit mode</b> or <b>Patrol Mode</b> is lost; or when the link to all baby units being viewed in <b>Split Baby unit mode</b> is lost.
	On when the parent unit is connected to AC power, or the battery is charging. Flashes when the parent unit battery is low and needs charging. Off when the parent unit is disconnected from AC power.
<b>TALK</b>	On when the parent unit is talking to the baby unit.
	On when the speaker volume of the parent unit is turned off.

## Parent unit display icons

	<b>Connection status</b> <ul style="list-style-type: none"> <li>Full signal strength is detected between the baby unit and the parent unit.</li> <li>Partial signal strength is detected between the baby unit and the parent unit.</li> <li>No signal strength is detected between the baby unit and the parent unit.</li> <li>Link between the baby unit and the parent unit is lost.</li> </ul>
	<b>Current view status</b> <ul style="list-style-type: none"> <li>Displays the number of the baby unit that is being viewed when in <b>Single Baby unit</b>.</li> <li>Displays the highlighted baby unit when in <b>Patrol Mode</b>.</li> </ul>
	<b>Zoom</b> <ul style="list-style-type: none"> <li>Displays when the camera at the baby unit has zoomed in.</li> </ul>
	<b>Temperature alert</b> <ul style="list-style-type: none"> <li>Displays when the temperature alert is set to on.</li> </ul>
	<b>Real-time temperature</b> <ul style="list-style-type: none"> <li>Displays the real-time temperature detected by the baby unit in Fahrenheit (°F) or Celsius (°C) (e.g. 57 °F or 14 °C).</li> </ul>
	<b>Sound level indicators</b> <ul style="list-style-type: none"> <li>Displays the sound level according to the scales of loudness when there is sound transmitted from the baby unit.</li> </ul>
	<b>Speaker volume off</b> <ul style="list-style-type: none"> <li>Displays the speaker volume of the parent unit is turned off.</li> </ul>
	<b>Speaker volume</b> <ul style="list-style-type: none"> <li>Displays the speaker volume level while adjusting.</li> </ul>

	<b>Battery status</b> <ul style="list-style-type: none"> <li>Animates when the battery is charging.</li> <li>Displays solid when the battery is fully charged.</li> <li>Displays when the battery is low and needs charging.</li> <li>Displays when no battery is installed but operates using AC power, or the battery has been installed incorrectly.</li> </ul>
--	--

## Parent unit main menu icons

	<b>Monitoring mode</b> <ul style="list-style-type: none"> <li>You can choose to monitor in <b>Single Baby unit</b>, <b>Split Baby unit</b> or <b>Patrol Mode</b> if there are more than one baby units in your system.</li> </ul>
	<b>Language</b> <ul style="list-style-type: none"> <li>You can select a language (English, French or Spanish) to be used in all screen displays.</li> </ul>
	<b>Display</b> <ul style="list-style-type: none"> <li>You can change the brightness of the parent unit screen.</li> <li>You can change the contrast of the parent unit screen.</li> </ul>
	<b>Alert tone</b> <ul style="list-style-type: none"> <li>You can set whether the parent unit beeps whenever the parent unit operates in low battery condition.</li> <li>You can set whether the parent unit beeps whenever the link between the parent unit and the baby unit is lost.</li> <li>You may turn on the sound alert so that the parent unit beeps as soon as the baby unit detects sounds which light up four sound level indicators on the parent unit when the parent unit volume is turned off manually.</li> </ul>

	<b>Temperature</b> <ul style="list-style-type: none"> <li>You can set the desired minimum room temperature of the baby unit.</li> <li>You can set the desired maximum room temperature of the baby unit.</li> <li>You can set whether the parent unit beeps whenever the temperature is out of the preset temperature range.</li> <li>You can set the temperature scale of the baby unit.</li> </ul>
	<b>Sensitivity</b> <ul style="list-style-type: none"> <li>You can use the parent unit to change the sound sensitivity level of the baby units.</li> </ul>
	<b>Sound activation</b> <ul style="list-style-type: none"> <li>You can set the screen to be turned on automatically whenever there are sounds detected from the baby units when the parent unit screen is turned off manually.</li> </ul>
	<b>Vibration</b> <ul style="list-style-type: none"> <li>You may turn on the vibration alert so that the parent unit vibrates as soon as the baby unit detects sounds which light up three sound level indicators on the parent unit.</li> </ul>
	<b>Pair/unpair</b> <ul style="list-style-type: none"> <li>The baby units and parent unit provided are already paired. You can add or replace baby units (VM303, purchased separately) to your baby monitor system.</li> </ul>

## Parent unit display messages

	<b>Battery low</b> <ul style="list-style-type: none"> <li>When the parent unit is powered by the rechargeable battery and the battery level is low, it needs to be recharged.</li> </ul>
	<b>Failed to connect</b> <ul style="list-style-type: none"> <li>The parent unit fails to switch to the next baby unit in <b>Single Baby unit</b> or <b>Patrol Mode</b>.</li> </ul>
	<b>No Link</b> <ul style="list-style-type: none"> <li>The selected baby unit slot is not linked to the parent unit.</li> </ul>
	<b>Pairing failed</b> <ul style="list-style-type: none"> <li>The selected baby unit cannot be paired with the parent unit.</li> </ul>
	<b>Confirm to unpair?</b> <ul style="list-style-type: none"> <li>You try to unpair the baby unit(s). The operation needs your confirmation.</li> </ul>
	<b>Pairing completed</b> <ul style="list-style-type: none"> <li>The selected baby unit has been paired with the parent unit.</li> </ul>
	<b>Unpairing completed</b> <ul style="list-style-type: none"> <li>The selected baby unit(s) has been unpaired with the parent unit.</li> </ul>
	<b>Please Wait...</b> <ul style="list-style-type: none"> <li>The link between the parent unit and the selected baby unit is lost, or the selected baby unit is out of range, or the selected baby unit slot is empty.</li> <li>When you have only one paired baby unit and the link is lost, or you have multiple paired baby units and the links are lost.</li> </ul>
	<b>Temperature too low</b> <ul style="list-style-type: none"> <li>The temperature detected from the selected baby unit is below the set minimum temperature.</li> </ul>
	<b>Temperature too high</b> <ul style="list-style-type: none"> <li>The temperature detected from the selected baby unit is above the set maximum temperature.</li> </ul>

## Using the baby monitor

### Power on or off the baby unit

- Slide **ON/OFF** switch to the left to turn on the baby unit. The **ON/OFF** LED light turns on.
- Slide **ON/OFF** switch to the right to turn off the baby unit. The **ON/OFF** LED light turns off.

### Power on or off the parent unit

- Press and hold **⏻** to turn on the parent unit. The **LINK** light turns on.
- Press and hold **⏻** again to turn off the parent unit. The **LINK** light turns off.

### Turn on or off the parent unit screen

You can turn on or off the parent unit screen without powering off the parent unit. You can still hear sound from the baby unit.

- Press **⏻** on the parent unit at any time.

### Adjust speaker volume

#### For parent unit:

- Press **VOL** when the parent unit is not in use.
- Press **▲**, **▼**, **◀** or **▶** to adjust the speaker volume.

#### NOTE

- When the parent unit speaker volume is set to zero, appears briefly and the light turns on.

#### For baby unit:

The baby unit speaker volume determines the talkback volume transmitted from your parent unit.

- Press **+VOL** or **-VOL** on the baby unit at any time.

## Set the language

You can select a language (English, French or Spanish) to be used in all screen displays.

- Press **MENU** when the parent unit is idle.
- Press **▼** or **▲** to choose **LANGUAGE**, then press **SELECT**.
- Press **▼** or **▲** to choose **English**, **Français** or **Español**, then press **SELECT** to confirm your selection.

## Adjust LCD brightness

You can change the brightness of the parent unit screen from **Level 1** to **Level 5**.

- Press **MENU** when the parent unit is idle.
- Press **▼** or **▲** to choose **DISPLAY**, then press **SELECT**.
- Press **SELECT** again to choose **Brightness**.
- Press **▼** or **▲** to choose the desired level of brightness, then press **SELECT** to confirm your selection.

## Adjust LCD contrast

You can change the contrast of the parent unit screen from **Level 1** to **Level 5**.

- Press **MENU** when the parent unit is idle.
- Press **▼** or **▲** to choose **DISPLAY**, then press **SELECT**.
- Press **▼** or **▲** to choose **Contrast**, then press **SELECT**.
- Press **▼** or **▲** to choose the desired level of contrast, then press **SELECT** to confirm your selection.

## Adjust the sound sensitivity of the baby units

You can choose to hear sounds from the baby units all the time, or to hear sounds that exceed a certain level. You can use the parent unit to adjust the microphone sensitivity of your baby units from **Level 1** to **Level 5**. The higher the sensitivity level, the more sensitive the baby unit is in detecting sounds for transmitting to the parent unit. The sound sensitivity level is preset to **Level 5**.

### Sound sensitivity table for reference

Display	Sensitivity	Description
Level 5	High sensitivity	<b>High sensitivity level</b> The parent unit speaker is constantly on, and you will hear all sounds (including background noises) from your baby's room.
Level 4		<b>Medium high sensitivity level</b> The parent unit speaker turns on for soft babbling and louder sounds from your baby. It remains quiet when your baby sleeps soundly.
Level 3		<b>Medium sensitivity level</b> The parent unit speaker turns on for loud babbling and louder sounds from your baby. It remains quiet when your baby makes soft sounds.
Level 2		<b>Medium low sensitivity level</b> The parent unit speaker turns on for crying and louder sounds from your baby. It remains quiet when your baby makes soft sounds.
Level 1	Low sensitivity	<b>Low sensitivity level</b> The parent unit speaker turns on for loud crying or screeching sounds from your baby. It remains quiet when your baby makes soft sounds.

- Press **MENU** when the parent unit is idle.
- Press **▼** or **▲** to choose **SENSITIVITY**, then press **SELECT**.
  - If you have more than one baby unit, the system prompts you to choose the desired baby unit or all baby units, press **▼** or **▲** to choose a desired baby unit or all baby units, then press **SELECT**.
- Press **▼** or **▲** to choose the desired sensitivity level, then press **SELECT** to confirm your selection.

### TIP

- You can adjust the baby unit placement to improve the sound detection.

## Turn on or off the sound activation

When sound activation is on, as long as no sound is detected within 50 seconds, the parent unit screen will turn off automatically to save power.

When your baby unit detects a sound, the sound activation triggers the parent unit screen to turn on automatically. When no sound is detected within 50 seconds, the screen will be off again.

- Press **MENU** when the parent unit is idle.
- Press **▼** or **▲** to choose **SOUND ACTIVATION**, then press **SELECT**.
- Press **▼** or **▲** to choose **On** or **Off**, then press **SELECT** to confirm your selection. The screen returns to main menu.

### NOTE

- If the sound sensitivity is set to **Level 5**, the parent unit screen may remain on continuously even though sound activation is on.

